

# 2017 Annual Drinking Water Quality Report

MAY 2018

## HARRIS COUNTY FRESH WATER SUPPLY DISTRICT 61

13205 Cypress N. Houston Rd., Cypress, Texas 77429

Telephone (281) 469-9405



### Your Drinking Water Is Safe

It is the highest priority of your water district to provide you and your family with a dependable supply of safe clean drinking water. The district has never violated any water quality standard and has been rated Superior Public Water System. The Texas Commission on Environmental Quality (TCEQ) has assessed the District's system and determined that the water is safe to drink. This report is a summary of the quality of the water we provide our customers. The analysis was made by using the data from the most recent U.S. Environmental Protection Agency (EPA) required tests and is presented in the attached pages. We hope this information helps you become more knowledgeable about what is in your drinking water. This report is sent to you pursuant to EPA regulations and the Safe Drinking Water Act and will be sent to you each year.



### **Where Do We Get Your Drinking Water?**

Your drinking water is obtained from ground water sources (The Gulf Coast Aquifer, Chicot & Evangeline). The quality of the water from District wells is high. District personnel monitor it on a regular basis. It is tested for contaminants as required by law. In addition, the Texas Commission on Environmental Quality (TCEQ) has completed a Source Water Susceptibility Assessment for your drinking water source(s). This report describes the susceptibility and types of constituents that may come into contact with your drinking water source based on human activities and natural conditions. The information contained in this assessment will allow us to focus on our source water protection activities.

### **En Espanol:**

Este informe incluye informacion importante sobre el agua potable. Si tiene preguntas o comentarios sobre este informe en espanol, favor de llamar al tel. (281) 469-9405 para hablar con una persona bilingue en espanol.



### **Public Participation Opportunities Board of Directors Meet:**

**Second, Third, & Fourth Wednesday of each month.**

**Time:** 6:30 P.M.

**Location:** 13205 Cypress N. Houston Rd.

**Telephone:** 281-469-9405 (24-hour emergency number)

**Website:** [www.harriscountyfwsd61.org](http://www.harriscountyfwsd61.org)

If you have specific questions about the information in this report, call Harris Co. FWSD No. 61 at (281) 469-9405 and ask for: Jerry Homan, General Manager, or Brian Breeding, Assistant General Manager.



### **Special Notice for the ELDERLY, INFANTS, CANCER PATIENTS, people with HIV/AIDS or other immune problems:**

You may be more vulnerable than the general population to certain microbial contaminants, such as *Cryptosporidium*, in drinking water. Infants, some elderly or immuno-compromised persons such as those undergoing chemotherapy for cancer; those who have undergone organ transplants, those who are undergoing treatment with steroids; and people with HIV/AIDS or other immune system disorders can be particularly at risk from infections. You should seek advice about drinking water from your physician or health care provider. Additional guidelines on appropriate means to lessen the risk of infection by *Cryptosporidium* are available from the **Safe Drinking Water Hotline (800-426-4791)**.

### **ALL Drinking Water May Contain Contaminants**

Since your drinking water meets federal standards there may not be any health based benefits to purchasing bottled water or point of use devices. Drinking water, including bottled water, may reasonably be expected to contain at least small amounts of some contaminants. The presence of contaminants does not necessarily indicate that water poses a health risk. More information about contaminants and potential health effects can be obtained by calling the Environmental Protection Agency's **Safe Drinking Water Hotline (800-426-4791)**.

### **About The Following Pages**

The pages that follow list all of the federally regulated or monitored constituents which have been found in your drinking water. U.S. EPA requires water systems to test up to 97 constituents.

### **Secondary Constituents**

Many constituents (such as calcium, sodium, or iron) which are often found in drinking water can cause taste, color, and odor problems. The taste and odor constituents are called secondary constituents and are regulated by the State of Texas, not the EPA. These constituents are not

causes for health concerns. Therefore, secondaries are not required to be reported in this document but they may greatly affect the appearance and taste of your water.

### **Definitions:**

#### **Maximum Contaminant Level**

(MCL) - The highest permissible level of a contaminant in drinking water. MCLs are set as close to the MCLGs as feasible using the best available treatment technology.

#### **Maximum Contaminant Level Goal**

(MCLG) - The level of a contaminant in drinking water below which there is no known or expected health risk. MCLGs allow for a margin of safety.

#### **Maximum Residual Disinfectant Level**

(MRDL) - The highest level of disinfectant allowed in drinking water. There is convincing evidence that addition of a disinfectant is necessary for control of microbial contaminants.

#### **Maximum Residual Disinfectant Level Goal**

(MRDLG) - The level of drinking water disinfectant below which there is known or expected risk to health. MRDLGs do not reflect the benefits of the use of disinfectants to control microbial contamination.

#### **Treatment Technique (TT)**

A required process intended to reduce the level of a contaminant in drinking water.

#### **Action Level (AL)**

The concentration of a contaminant which, if exceeded, triggers treatment or other requirements which a water system must follow.

### **Abbreviations**

ppm - Parts per million or milligrams per liter

ppb - Parts per billion or micrograms per liter

ppt - Parts per trillion or nanograms per liter

ppq - Parts per quadrillion-picograms per liter

UG/L - Micrograms per liter

PCI/L - Picocuries per liter (a measure of radioactivity)

MREM/YR - Millirem(s) per year.

NTU - Nephelometric Turbidity Units

MFL - Million fibers per liter (a measure of asbestos)

NA - Not Applicable






## Inorganic Regulated Contaminants

Constituent	Collection Date	Highest level Detected	Range of Detected Levels	MCLG	MCL	Units	Violation	Source of Constituent
Arsenic	2017	7.3	2.6 – 7.3	0	10	ppb	N	Erosion of natural deposits; Runoff from orchards; Runoff from glass and electronics production wastes.
Barium	2017	0.268	0.155 – 0.268	2	2	ppm	N	Discharge of drilling wastes; Discharge from metal refineries; Erosion of natural deposits.
Fluoride	2017	0.82	0.17 – 0.82	4	4	ppm	N	Erosion of natural deposits; Water additive which promotes strong teeth; Discharge from fertilizer and aluminum factories.
Nitrate as N <sub>3</sub>	2017	0.17	0.02 – 0.17	10	10	ppm	N	Runoff from fertilizer use; Leaching from septic tanks, sewage; Erosion of natural deposits.
Selenium	2017	6.8	3.0 – 6.8	50	50	ppb	N	Discharge from petroleum and metal refineries; Erosion of natural deposits; Discharge from mines.

## Radioactive Contaminants

		Highest level Detected	Range of Detected Levels	MCLG	MCL	Units	Violation	Source of Constituent
 * Beta/photon emitters	2017	4.2**	0 - 4.2**	0	50*	PCI/L	N	Decay of natural and man-made deposits.
Gross Alpha Excl. Radon and Uranium	2017	4	0 - 4	0	15	PCI/L	N	Erosion of natural deposits.
Uranium	2017	3.2	0 - 3.2	0	30	UG/L	N	Erosion of natural deposits.

\* The MCL for beta particles is 4 mrem/yr. EPA considers 50 pCi/L to be the level of concern for beta particles.

\*\* Because the beta particle results were below 50 pCi/L, no testing for individual beta particle constituents was required.

## Synthetic organic contaminants Including pesticides/herbicides

Di (2-ethylhexyl) phthalate	2017	8	0 - 15	0	6	ppb	N	Discharge from rubber and chemical factories.
-----------------------------	------	---	--------	---	---	-----	---	---

 Harris County Fresh Water Supply District No. 61 does not add fluoride to your water. 

Save water – Save money

Directions for fixing leaky faucets can be found at: [www.ehow.com/how\\_2303474\\_fix-dripping-faucet.html](http://www.ehow.com/how_2303474_fix-dripping-faucet.html)



## Fix The Drip

A slow drip can waste as much as 170 gallons of water each day – that adds up to 5,000 gallons a month. Leaky faucets are usually easy and inexpensive to repair. Turn off the valve under the sink until the repair can be made.

Please help reduce water loss by reporting all leaks to - **Harris County Fresh Water Supply District 61 at 281.469.9405**





### Maximum Residual Disinfectant Level

Constituent	Collection Date	Highest Level Detected	Range of Levels Detected	MCLG	MCL	Units	Violation	Source of Constituent
Chlorine	2017	1.9	1.2 - 1.9	4.0	4.0	ppm	N	Disinfectant used to control microbes.

### Disinfection Byproducts

Constituent	Collection Date	Highest Level Detected	Range of Levels Detected	MCLG	MCL	Units	Violation	Source of Constituent
Total Trihalomethanes (TTHM)	2017	3.0	0 - 5.6	No goal	80	ppb	N	By-product of drinking water disinfection.
Haloacetic Acids (HAA5)	2017	1.0	0 - 1.1	No goal	60	ppb	N	By-product of drinking water disinfection.

### Lead and Copper

Constituent	Date Sampled	MCLG	Action Level (AL)	90 <sup>th</sup> Percentile	# Sites Over Over AL	Units	Violation	Source of Constituent
Copper	2016	1.3	1.3	0.254	0	ppm	N	Corrosion of household plumbing systems; Erosion of natural deposits.
Lead	2016	0	15	2	0	ppb	N	Corrosion of household plumbing systems; Erosion of natural deposits; Leaching from wood preservatives.

If present, elevated levels of lead can cause serious health problems, especially for pregnant women and young children. Lead in drinking water is primarily from materials and components associated with service lines and home plumbing. This water supply is responsible for providing high quality drinking water, but cannot control the variety of materials used in plumbing components. When your water has been sitting for several hours, you can minimize the potential for lead exposure by flushing your tap for 30 seconds to 2 minutes before using water for drinking or cooking. If you are concerned about lead in your water, you may wish to have your water tested. Information on lead in drinking water, testing methods, and steps you can take to minimize exposure is available from the Safe Drinking Water Hotline or at <http://www.epa.gov/safewater/lead>.

**Turbidity**

Not Required

**Total Coliform**

Not Detected

**Fecal Coliform**

Not Detected





## Secondary and Other Not Regulated Constituents (No associated adverse health effects)

Constituent	Collection Date	Highest Level Detected	Range of Detected Levels	MCLG	MCL	Units	Source of Constituent
Bicarbonate	2.2.2017	359	187 - 359	NA	NA	ppm	Corrosion of carbonate rocks such as limestone.
Calcium	2.2.2017	57.6	12.3 - 57.6	NA	NA	ppm	Abundant naturally occurring element.
Chloride	2.2.2017	62	50 - 62	300	300	ppm	Abundant naturally occurring element; used in water purification; byproduct of oil field activity.
Iron	2.2.2017	0.143	0.020 - 0.143	.3	.3	ppm	Erosion of natural deposits; iron or steel water delivery equipment or facilities.
Magnesium	2.2.2017	5.68	3.19 - 5.68	NA	NA	ppm	Abundant naturally occurring element.
Manganese	2.2.2017	0.0082	<0.001 - 0.0082	0.05	0.05	ppm	Abundant naturally occurring element.
Sodium	2.2.2017	151	30.3 - 151	NA	NA	ppm	Dissolved from minerals and rocks such as feldspars, clay, halite, and other evaporates.
Sulfate	2.2.2017	13	5 - 13	300	300	ppm	Naturally occurring; dissolved from rocks and soils containing gypsum, iron, sulfides, and other sulfur compounds. Present in mining, industrial wastes.
Potassium	2.2.2017	2.38	1.69 - 2.38	NA	NA	ppm	Common in silicate minerals such as feldspars and in clay minerals.
Total Alkalinity As CaCO <sub>3</sub>	2.2.2017	294	153 - 294	NA	NA	ppm	Naturally occurring soluble mineral salts.
Total Dissolved Solids	2.2.2017	448	293 - 448	NA	NA	ppm	Naturally occurring calcium.
Total Hardness As CaCO <sub>3</sub>	2.2.2017	165	43.8 - 165	NA	NA	ppm	Naturally occurring calcium.
Zinc	2.2.2017	0.006	<0.005 - 0.006	5	5	ppm	Moderately abundant naturally occurring element; used in the metal industry.

## Water Saving Tips

H<sub>2</sub>O 101

Did you know there are plenty of simple ways to minimize your water usage and water bill?

### TIP 02 Faucet Aerators

Did you know household sinks account for nearly 50% of water usage at home? By replacing your faucet, you can save up to 2 gallons a minute.

### TIP 04 Check for Leaks!

A leaky faucet or old washer can cost you up to 25 gallons of water a day.

### TIP 05 Take Shorter Showers!

A four minute shower can use up to 40 gallons of water.

### TIP 01 Showerheads

Replacing your showerhead could save you 2 gallons per minute!



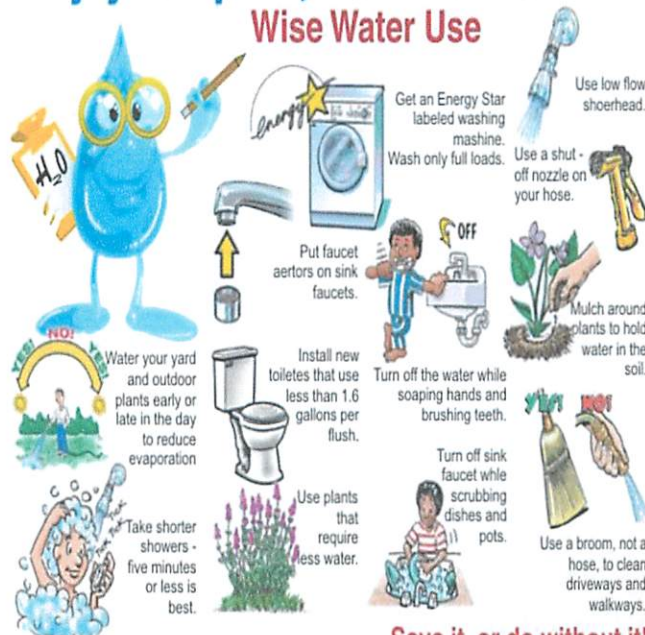
### TIP 03 Toilets



Did you know that changing your home toilet to a low-tank model can save you 2 gallons a flush? That's 14,000 gallons of water a year!

## Play your part, be water smart!

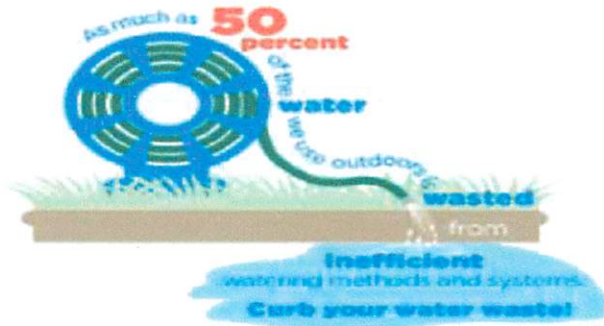
### Wise Water Use



Save it, or do without it!

Thank you for your interest in your drinking water. If you have any questions or comments, please call our office (281) 469-9405.

## The Board of Directors and Staff Harris County Fresh Water Supply District No. 61



Harris County Fresh Water Supply District 61 has online Bill-Pay options for your convenience in paying your water utility bill at: [www.harriscountyfwsd61.org](http://www.harriscountyfwsd61.org)